

# FOR LEASE



**DEXTER**  
COMPANIES, LLC

**1865 CORPORATE DRIVE  
SUITES 230-235  
12,234 SF TOTAL  
2,740 SF OFFICE**



**Gwinnett Corporate Center**

**Opportunity Zone Tax Credits Available**

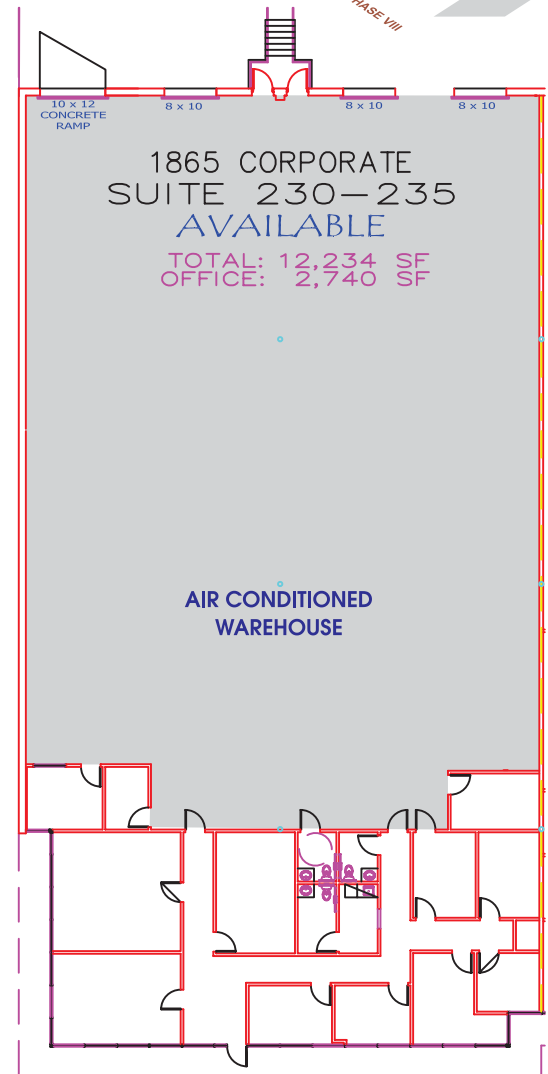
- Corner of building with over 120 lineal feet of 9' high glass
- Air Conditioned Warehouse
- Rear load
- 20' Average Clear Ceiling Height
- New carpet and paint allowance
- Class III Sprinkler System
- 120/208v/3ph electrical system
- 4 dock doors: (Dock High: 3 - 8'w x 10'h; Ramp: 1 - 10'w x 12'h)

**FOR MORE INFORMATION CONTACT:**

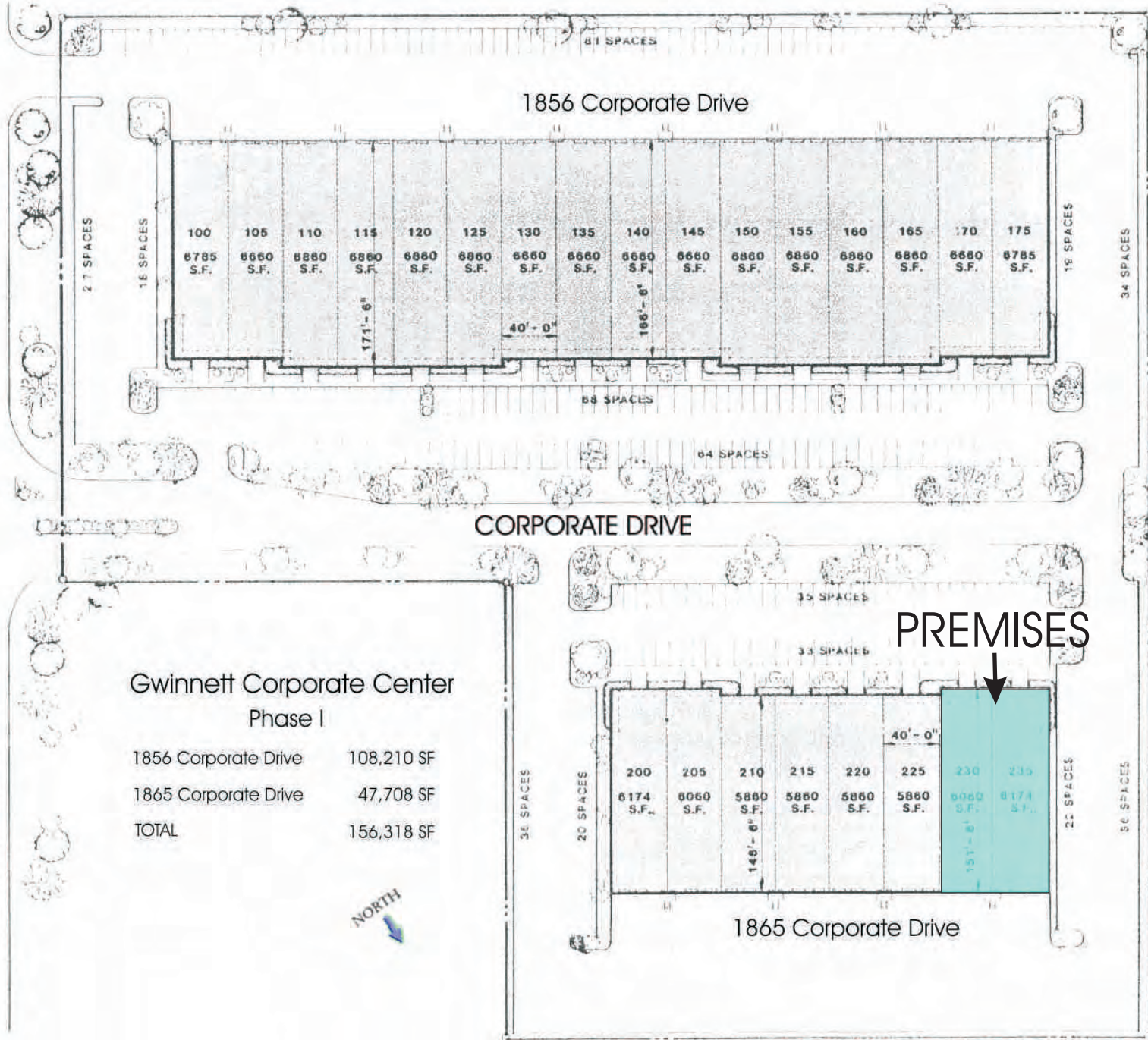
**ALLAN W. ANDERSON, CCIM**

**ON-SITE OFFICE: 404.239.9400 EXT. 204**

**AANDERSON@DEXTERCOS.COM**



# INTERSTATE - 85



10 x 12  
CONCRETE  
RAMP

8 x 10

8 x 10

8 x 10

1865 CORPORATE  
SUITE 230-235  
**AVAILABLE**

TOTAL: 12,234 SF  
OFFICE: 2,740 SF

**AIR CONDITIONED WAREHOUSE**

